

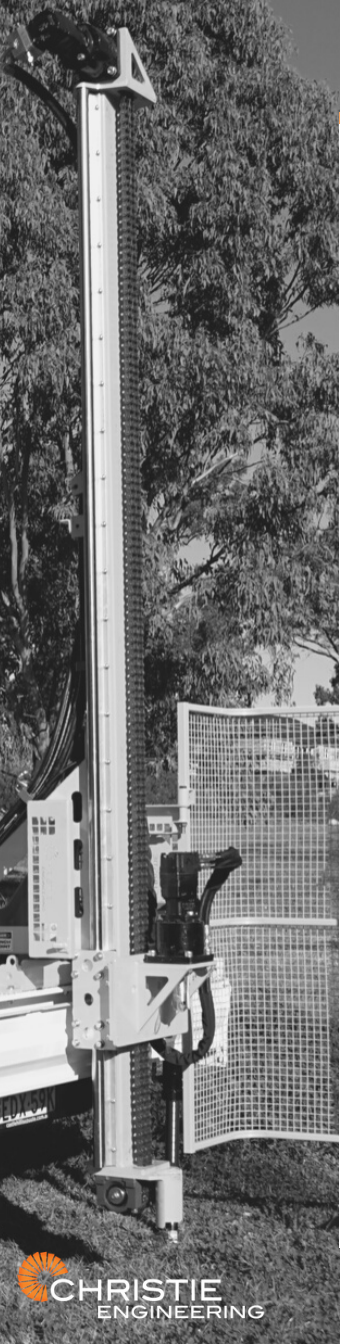


CHRISTIE ENGINEERING

ABN 062468

Drilling Rigs





SPECIFICATIONS

Standard Drill Rig

- Custom built auger drill rig with linear guided chain driven mast, approx. 200kg extraction force with planetary gearbox driven chain feed using 1 inch pitch duplex roller drive chain, 3.1m or 1.8m stroke.
- Tilting mast to fold down the rig when in transit with a pivot point designed with minimal overhang with overcentre load holding safety valve.
- Planetary drive hydraulic drill head, approx. 1000NM @ 100RPM with 2 inch round output shaft. Sub adapter universal joint included 2" - 1 1/8 Hex for use with standard 3.5 augers.
- Optional Atlas Copco LH220 direct push hammer for undisturbed soil sampling with all tooling to fit 50mm soil sampling tubes and 2 x 50mm x 1.6m sampling tubes included with this option.
- Adjustable hydraulic pressure control to limit the down force on the feed so the vehicle will not be raised up during drilling.
- Pressure gauge on control panel for calculating either auger torque or feed pressure.
- 65L hydraulic reservoir with sight level indicator, spin on oil filter cartridge and suction strainers inside tank.
- Powered by GX690 2 cylinder Honda petrol power pack, with direct drive twin hydraulic pump arrangement for dual function control without slowing auger rotation. Diesel engines are an option.
- 2 heavy duty custom stabiliser cylinders with larger 50mm chrome rods, custom fitted into the vehicle tray or trailer, OR we can fit a single dump cylinder on the mast to take all the load when drilling, this makes it easier to fit to a standard vehicle tray with little structural modifications (some strengthening will need to be added where the frame is bolted through the tray)
- 25 Litre stainless steel petrol fuel tank, diesel engines can be plumbed into a diesel vehicles tank.
- Hydraulic hose shielding installed on all wear points. mine spec rigs will need burst protection and must be crimped on during hose manufacturing, this will add extra cost depending on different rig options.
- Emergency stop push button switches and all safety decals included.
- Main parts will be powder coated safety yellow or specified customers colours within powder coating range.
- Full wrap around mesh safety cage is supplied with all machines with electric interlock safety switch on rotation

PRICES

Standard Drill Rig

Base Prices

1.8m stroke mast with single leg cylinder on rear of mast **POA**

1.8m stroke mast with 2 stabiliser cylinders mounted on tray. (custom built or modified tray or trailer must be used for this option)

POA

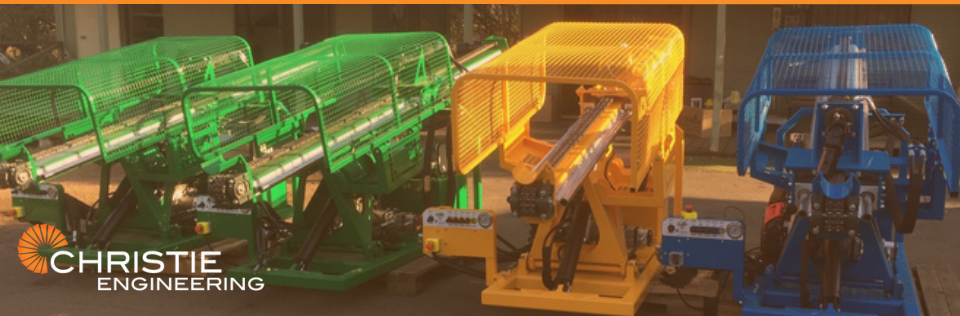
3.1m stroke mast with 2 stabiliser cylinders mounted on tray. (custom built or modified tray or trailer must be used for this option)

POA

Options

- Standard steel vehicle tray painted white, customer made to fit our drill with 2 stabiliser legs - **POA**
- Dual axle trailer - **POA** A locally manufactured trailer with heavy duty rocker springs and led lighting. The trailer is custom built with a heavy duty c-channel across the rear to strengthen where the cylinders attach. A Long A frame draw bar and over-ride brakes, painted in charcoal hammer-tone.
- Direct push Atlas Copco soil sampling hammer - **POA** supplied with 2x soil sampling tubes and tooling to operate.
- Hydraulic winch with top jib for spt sampling - **POA**
- High and low 2 speed motor with mechanical control, approx. 100/160rpm - **POA**
- Air/water swivel is fitted to the 2 speed gearbox (Mayhew Jnr) - **POA**
- AWJ swivel for auger drive motor **POA**
- Oil coolers can be fitted as options for longer duty cycle -**POA**
- Water cooled diesel engine (Kubota) better suited to light trucks due to extra weight - **POA**
- Standard Auger flights/tooling: Auger flights USA made CFA HEX-COR 3.4" X 1500mm long (or to specs) - **POA** (includes hex joiners and d pins), 95mm tungsten cutting tip (various cutting types available) - **POA**
- Also available for limited time till stock runs out, used ex-Australian military trailers **POA** (original manufactures price was \$29,000) please call for specifications on these. Cost includes extra modifications and cylinder mounting for drill rigs.

Prices do not include GST



STANDARD DRILL RIG





SPECIFICATIONS

Mini Drill Rig

- Powered by a Kubota 3 cylinder D1105 1.1 litre diesel engine 21hp@3000 rpm, water cooled, electric start
- Hinowa hydraulic widening track base, min width 850mm, max width 1180mm planetary drive hydraulic hub motors, proportional control on remote controller
- 2.1 stroke mast with top mount planetary gearbox on feed and valve braked motor 1" pitch duplex feed chain, approx. push, 2000kg pull chrome linear guided mast.
- Twin hydraulic pumps, 12v Dc oil cooler, 70 litre hydraulic oil tank, in tank hydraulic oil filter and sight gauge.
- Fold out control panel that features manual auger rotation valve fed from first pump, 2 pressure gauges, one each pump.
- Tethered 3m cable Autec remote control tracking console, electric valves for legs, tilt dump, track widening and proportional paddles on the remote for forward/ reverse on tracks. All electric functions can have levers screwed on for manual override.
- Fold in control panel and both front individually controlled hydraulic jack legs to tilt machine, 2 rear fixed hydraulic jack legs.
- Dump mast for raising and lowering the mast position.
- Lower foot supplied with 10" guide, slip in shoes can be supplied, removable front section.
- Safety cage fitted as a standard option with electric lock out switch and hydraulic cut out valve.
- Fully enclosed body style, removable panels and lift up lid for servicing, 25 litre diesel fuel tank with electric fuel gauge, battery isolator and emergency stops standard.
- Majority of parts are all zinc plated before powder coating

OPTIONS

- Single speed auger drive, planetary gearbox universal joint with 1 1/8 hex drive, approx. 100rpm, 1200Nm.
- Atlas Copco undisturbed hydraulic soil sample hammer attachment with sliding sideshift head, hydraulic function changeover valve, anvil, extractor collars to suit 50mm sampling tubes.
- Hydraulic planetary PL1 pull master winch with top fold down jib, rated Australian made winch rope and weighted hook, swing out drill head for winch operation.
- 2 speed mechanical gearbox rock drill coring and auger head with, fitted with Mayhew Jnr pin thread, approx. low speed 100rpm 2000Nm, high speed 700 rpm 500Nm. Rlgs have been pushed to core to a depth of 50m or NQ size rod, rock sampling in Sydney sandstone.
- Hydraulic SPT hammer can be fitted to sliding guided tube on mast, lifted by the winch, remote hydraulic outlets to plug in spt when in use, hydraulic valve for outlets supplied even if spt option is not used, can also be used for hydraulic breakout jaws.
- Cost: \$90,000+GS



MINI DRILL RIG



ACCESSORIES



Continuous Flight Auger

\$495.00 + GST

1.5m x 3.5inch OD

HEX core hard faced fully seam welded

Supplied with HEX pin and D pin



Hydraulic Foot Clamp

\$1750+GST

40mm to 150mm rod diameter range

supplied with 1.5m hose whips

tungsten carbide teeth

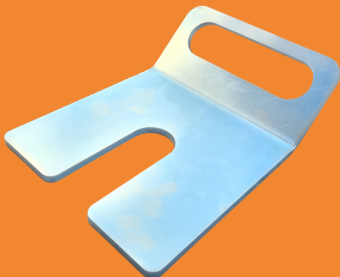
load holding poppet valve



Auger D Pin

\$16.50 + GST

½ inch



Auger Holder Plate

\$80.00 + GST

8mm laser cut, zinc plated &
folded

ACCESSORIES



Cutting Tips

\$290.00 + GST

4 inch carbide tipped



Universal Joint Assembly

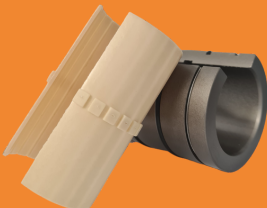
\$550.00 + GST

2inch shaft to 1 1/8 hex female
other variations available POA



Replacement Universal Joint

\$30.00 + GST



40mm Super Linear Bearing Sleeve plastic bush

\$50.00 + GST

Chrome shaft replacement bushes

ACCESSORIES



U50 hydraulic Sample Extruder

\$1750 + GST

Can be supplied to fit all Christie Ute tray mounted rigs
Fit under the rear C-channel



2 Speed Drill Motor

POA

Low speed high torque approx. 100rpm
High speed low torque approx. 600rpm
Supplied with Mayhew Jnr pin output



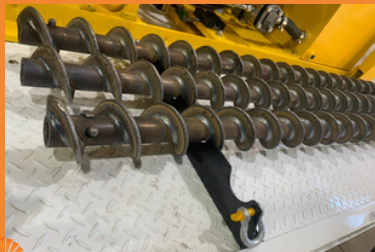
Hydraulic Winch

POA

Pullmaster winches PL1 or PL2 can be used depending on application

PL1 500kg

PL2 1000kg



Auger Tie down Rack

POA

5mm laser cut & folded
For trailer or Ute tray backs



Contact us with any further queries;

@ www.christieengineering.com.au

✉ enquiries@christieengineering.com.au

☎ (02) 9620 1208

📍 123 Delaware Road Horsley Park
NSW 2175

